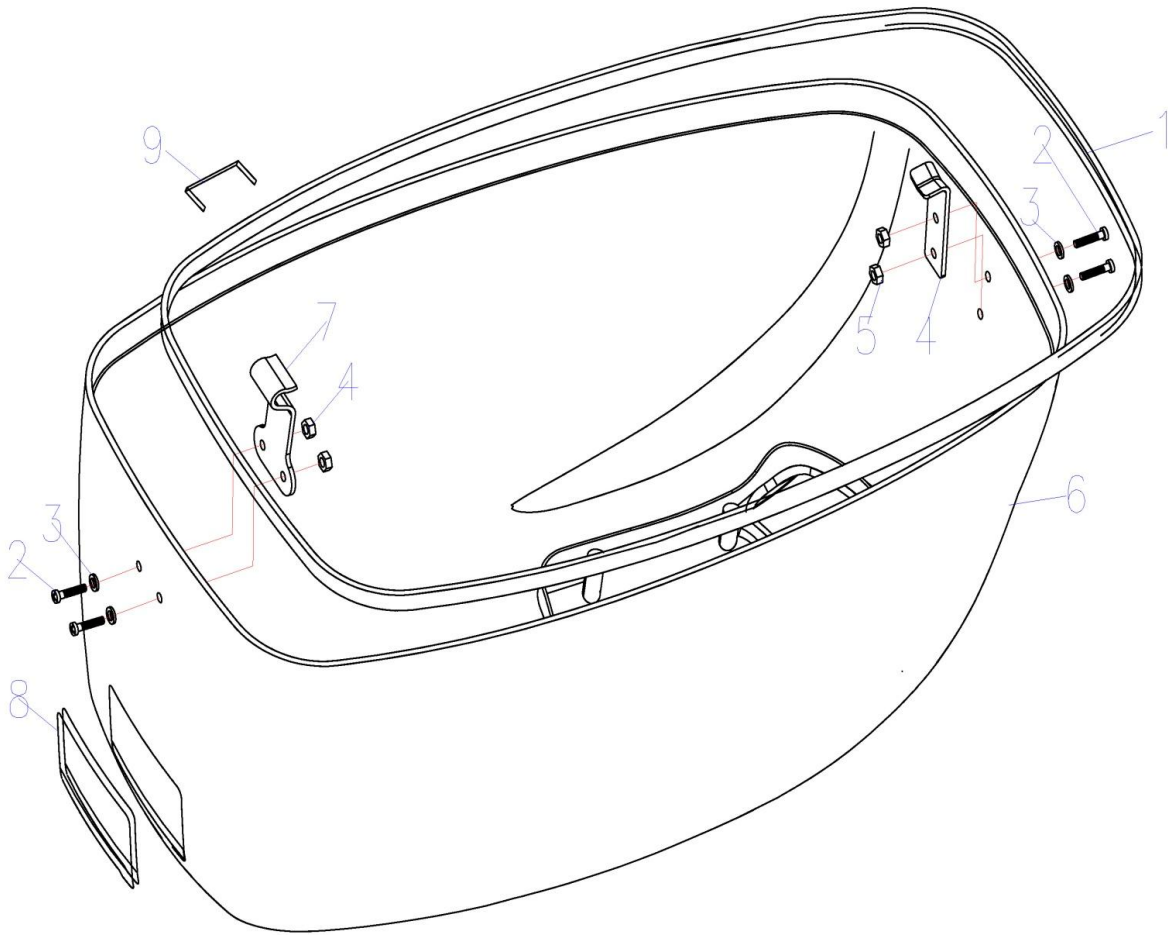
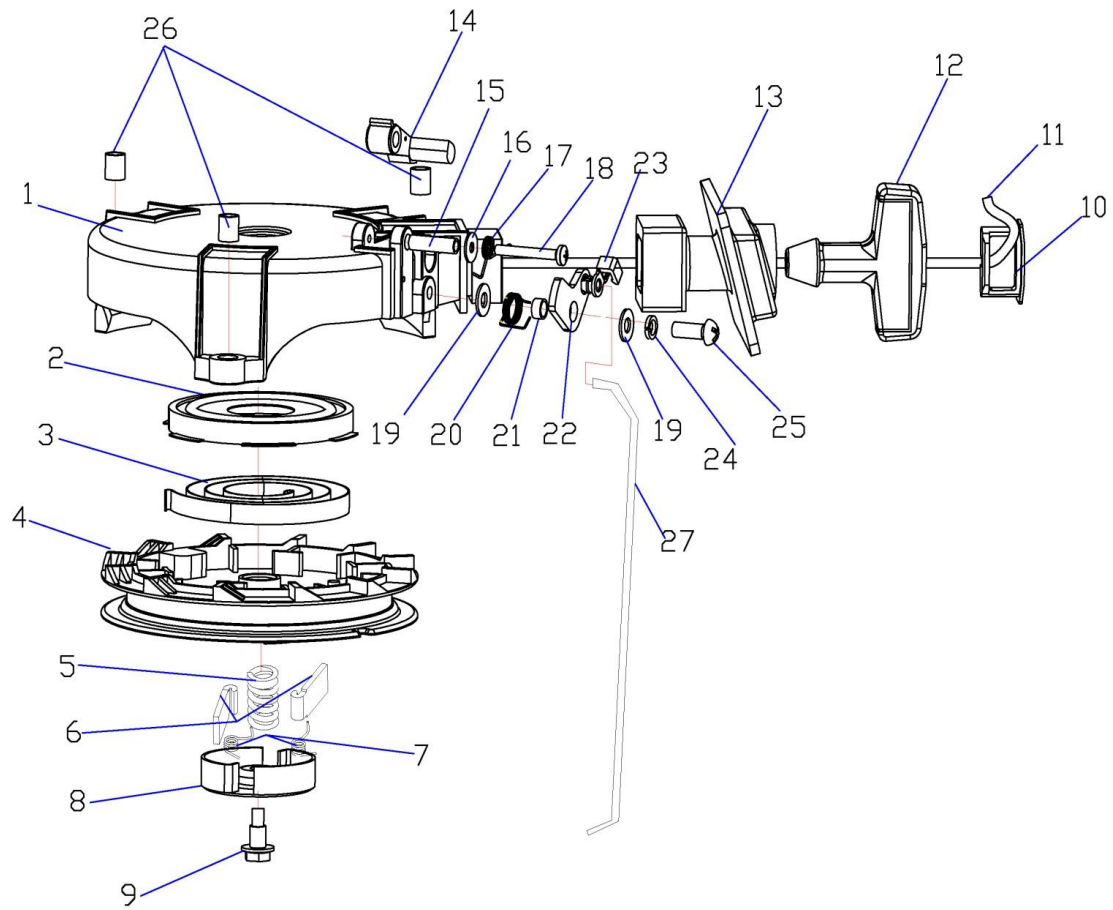


REF NO	物料代码	PART CODE	DESCRIPTION (EN)	DESCRIPTION	Q'TY
1		5F-07.00.00	Top cowling assy.	顶罩组件	1
2		5F-01.02.02	Recoil starter	起动罩组件	1
3		5F-01.01.00	Power system	动力系统	1
4		5F-01.04.00	Fuel system	燃油系统	1
5		5F-02.00	Bottom parts	底罩部件	1
6		FRF4H-03.00.00	Clamp bracket parts	夹紧托架部件	1
7		FRF4H-06.27	Dowel pin	空心定位销	2
8		5F-05.00.00	Waterborne parts	水上部件	1
9	0104007	GB/T5783	Bolt	六角头螺栓M6X30	6
10	0104171	GB/T97.1	Plane washer	平垫6	6
11		FRF4H-04.00.00	Steering parts	操舵部件	1
12		FRF4H-06.00.00	Lower unit	水下驱动部件	1
13	0104154	GB/T93	Spring washer	弹垫6	3
14	0104007	GB/T5783	Bolt	六角头螺栓M6X25	3
15	1051404	5F-01.01.01	Gasket	机体密封垫	1
16	10405106	GB/T5782-2000	Bolt	六角头螺栓M6X40	2
17	0104171	GB/T97.1	Plane washer	平垫6	2
18	0104007	GB/T5783	Bolt	六角头螺栓M6X15	4
19	0104171	GB/T97.1	Plane washer	平垫6	4

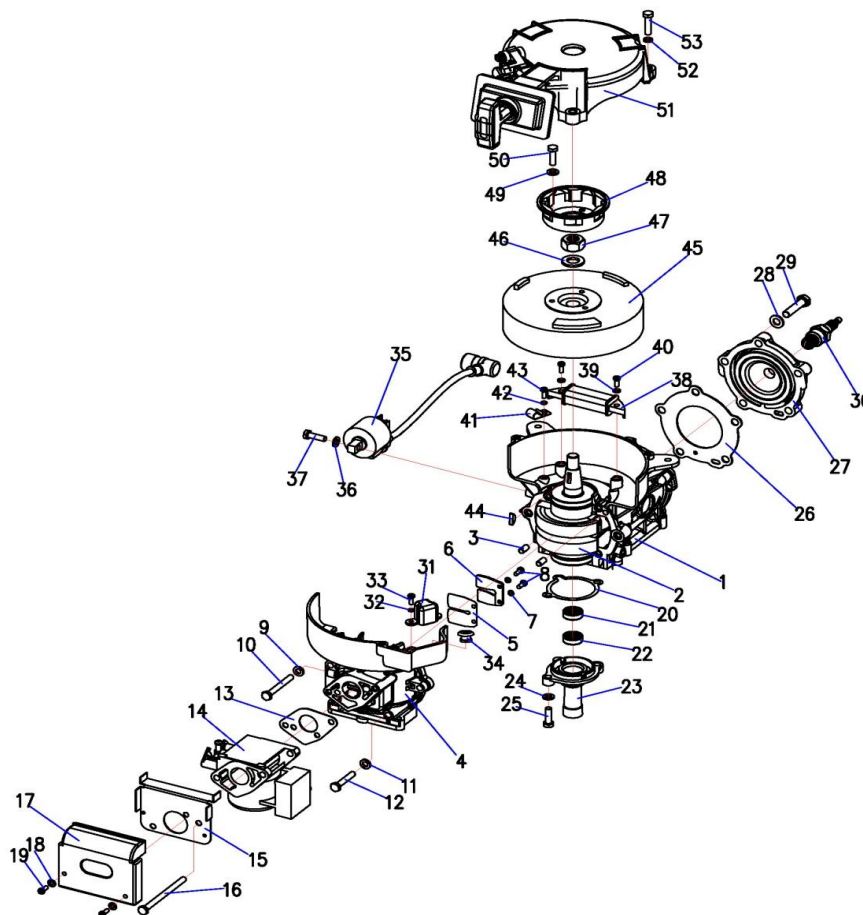


REF NO	物料代码	PART CODE	DESCRIPTION (EN)	DESCRIPTION	QTY
1	01060623	9.8F-07.02	Rubber sealing stripe	橡胶密封条	1
2	0104114	GB/T822	Screw	十字槽盘头螺钉M4x16	4
3	0104160	GB/T848	Plane washer	平垫4	4
4		9.9F-07.05	Rear clamp hook	后锁紧钩	1
5	0104136	GB/T6170-2000	Bolt	六角螺母M4	4
6	1071407	5F-07.01	Top cowling	顶罩	1
7	01080630	9.8F-07.03	Front locker	前锁紧钩	1
8	01060624	9.8F-07.07	Sealing ring	密封圈	1
9	01090131	15F-07.07	Binding nail	装帧订	20



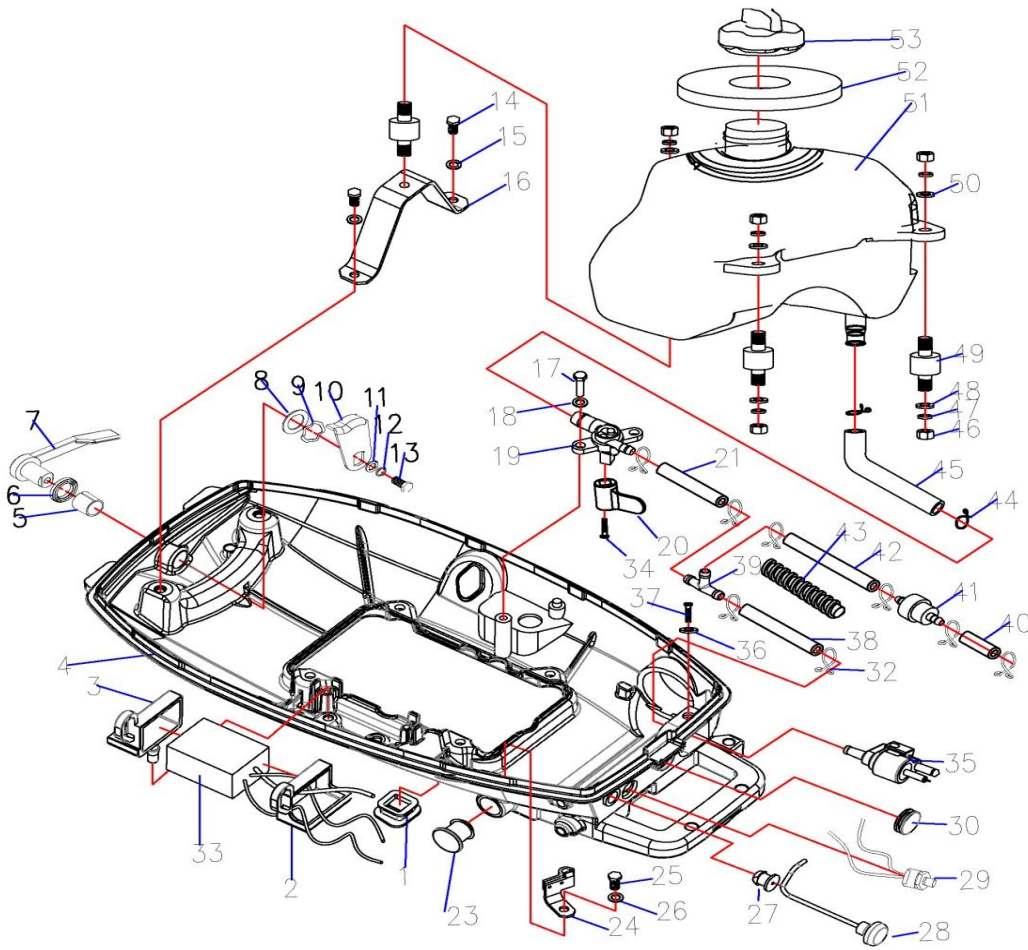
REF NO	物料代码	PART CODE	DESCRIPTION (EN)	DESCRIPTION (CN)	Q'TY
1	01071401	5F-01.02.03	Starter cover	启动罩	1
2	01080602	9.8F-01.01.10	Spiral spring plate	涡型弹簧盘	1
3	1090603	9.8F-01.01.09	Spiral spring	涡型弹簧	1
4	01070601	9.8F-01.01.07	Sheave drum	启动轮	1
5	1090601	9.8F-01.01.05	Spring	压盘弹簧	1
6	01070626	9.8F-01.01.04	Drive arm	启动拨爪	2
7	01090602	9.8F-01.01.06	Drive torsion spring	启动扭簧	1
8	01080601	9.8F-01.01.02	Starter pulley	启动压盘	1
9	01020601	9.8F-01.01.03	Bolt	压盘螺栓	1
10	01070110	15F-01.01.10	Handle cap	手柄盖	1
11		9.8F-01.01.08	Starter rope	启动绳 (5*1800)	1
12	01060103	15F-01.01.08	Starter handle	启动手柄	1
13	01060601	9.8F-01.01.11.00	Rubber damper	橡胶托架组件	1
14	1070604	9.8F-01.01.16	Stopper arm	制动器	1
15	1020604	9.8F-01.01.17	Copper bushing	铜衬套	1
16	0104164	GB/T96	Plane washer	平垫4 (外12 厚0.8)	1
17	01090604	9.8F-01.01.18	Torsion spring	制动器扭簧	1
18	104076	GB/T818	Screw	十字槽盘头螺钉4*30	1
19	0104171	GB/T97.1	Plane washer	平垫6 (13*6*1)	2
20	01091401	5F-01.02.01	Spring	导向块扭簧	1

21	01020602	9.8F-01.01.14	Collar	垫管	1
22	01070602	9.8F-01.01.12	Stopper arm guide	制动器导向块	1
23	01070603	9.8F-01.01.13	Connector	连杆接头	1
24	0104154	GB/T93	Spring washer	弹垫6	1
25	0104076	GB/T818	Bolt	十字槽盘头螺栓6*16	1
26	01021402	5F-01.02.06	Starter cover collar	起动罩垫管	3
27	01021408	5F-05.07	Stopper arm lever	制动器连杆	1



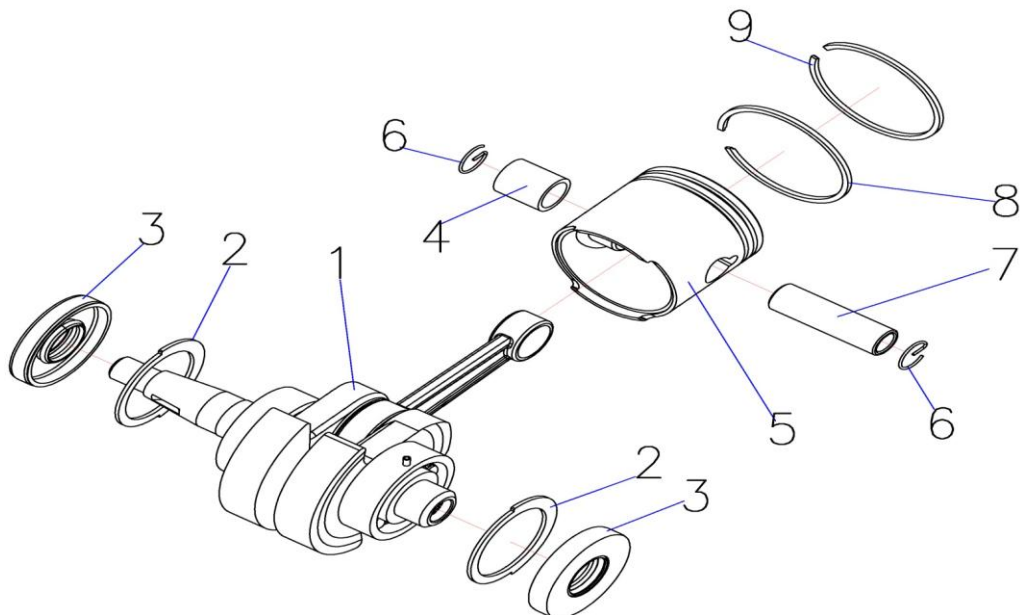
REF NO	物料代码	PART CODE	DESCRIPTION (EN)	DESCRIPTION	QTY
1		5F-01.01.03.0 0	Crankcase	曲轴箱	1
2		5F-01.01.02.00	Crank,rod & piston assy.	曲轴连杆活塞组件	1
3	01020110	15F-01.06.20	Dowel pin	定位销6*12	2
4		5F-01.01.04.01	Crankcase cover	箱盖	1
5	01081402	5F-01.01.04.03	Valve	阀片	1
6	01081401	5F-01.01.04.02	Inlet valve seat	进气阀座	1
7	0104154	GB/T93	Spring washer	弹垫4	2
8	0104076	GB/T818	Screw	十字槽盘头螺钉M4*10	2
9	0104171	GB/T97.1	Plane washer	平垫6	4
10	01040170	GB/T5782	Bolt	六角头螺栓M6*55	4
11	0104171	GB/T97.1	Plane washer	平垫6	2

12	01040170	GB/T5782	Bolt	六角头螺栓M6*35	2
13	01051412	5F-01.04.07	Carburetor gasket	化油器密封垫	1
14	01051413	5F-01.04.08.00	Carburetor assy.	化油器组件	1
15	01071403	5F-01.04.10	Air Intake silencer seat	空滤器座	1
16	01040170	GB/T5782	Bolt	六角头螺栓M8*85	2
17	01071402	5F-01.04.09	Air intake silencer cover	空滤器盖	1
18	0104171	GB/T97.1	Plane washer	平垫4	2
19	0104076	GB/T818	Screw	十字槽盘头螺钉M4*18	2
20	01051409	5F-01.01.08	Oil seal housing gasket	油封壳体密封片	1
21	01050309	F4-01.06.15.03	Oil seal	双唇口油封B10.8*21*7	1
22	01050309	F4-01.06.15.03	Oil seal	双唇口油封B10.8*21*7	1
23	01011405	5F-01.01.07.01	Oil seal housing	油封壳体	1
24	0104171	GB/T97.1	Plane washer	平垫6	2
25	0104007	GB/T5783	Bolt	六角头螺栓M6*20	2
26	01051408	5F-01.01.06	Cylinder gasket	汽缸垫	1
27	01011404	5F-01.01.05	Cylinder head	汽缸头	1
28	0104171	GB/T97.1	Plane washer	平垫8	5
29	01040170	GB/T5782	Bolt	六角头螺栓M8*35	5
30	01051411	5F-01.03.06	Spark plug	火花塞	1
31	01031401	5F-01.03.02	Impulser assy.	触发器组件	1
32	0104154	GB/T93	Spring washer	弹垫4	2
33	0104076	GB/T818	Screw	十字槽盘头螺钉M4*12	2
34	01061407	5F-01.03.11	Rubber bushing	橡胶衬圈	1
35	01031403	5F-01.03.05	Ignition coil	高压包	1
36	104171	GB/T97.1	Plane washer	平垫6	2
37	0104007	GB/T5783	Bolt	六角头螺栓M6*20	2
38	01031402	5F-01.03.03	Charging coil assy.	充电线圈组件	1
39	0104154	GB/T93	Spring washer	弹垫4	1
40	0104076	GB/T818	Screw	十字槽盘头螺钉M5*20	1
41		5F-01.03.04	Charging coil clip	充电线圈线夹	1
42	0104154	GB/T93	Spring washer	弹垫4	1
43	0104076	GB/T818	Screw	十字槽盘头螺钉M4*8	1
44	01100602	9.8F-01.06.27	Woodruff key	曲轴半圆键	1
45	01031405	5F-01.03.13	Flywheel assy	飞轮组件	1
46	0104171	GB/T97.1	Plane washer	平垫12	1
47	01080638	9.8F-01.03.04	Flywheel nut	飞轮螺母	1
48	01080605	9.8F-01.01.20	Starter pulley	启动毂	1
49	0104171	GB/T97.1	Plane washer	平垫6	3
50	0104007	GB/T5783	Bolt	六角头螺栓M6*12	3
51		5F-01.02.00	Starter system	启动系统	
52	0104154	GB/T93	Spring washer	弹垫6	3
53	0104007	GB/T5783	Bolt	六角头螺栓M6*25	3

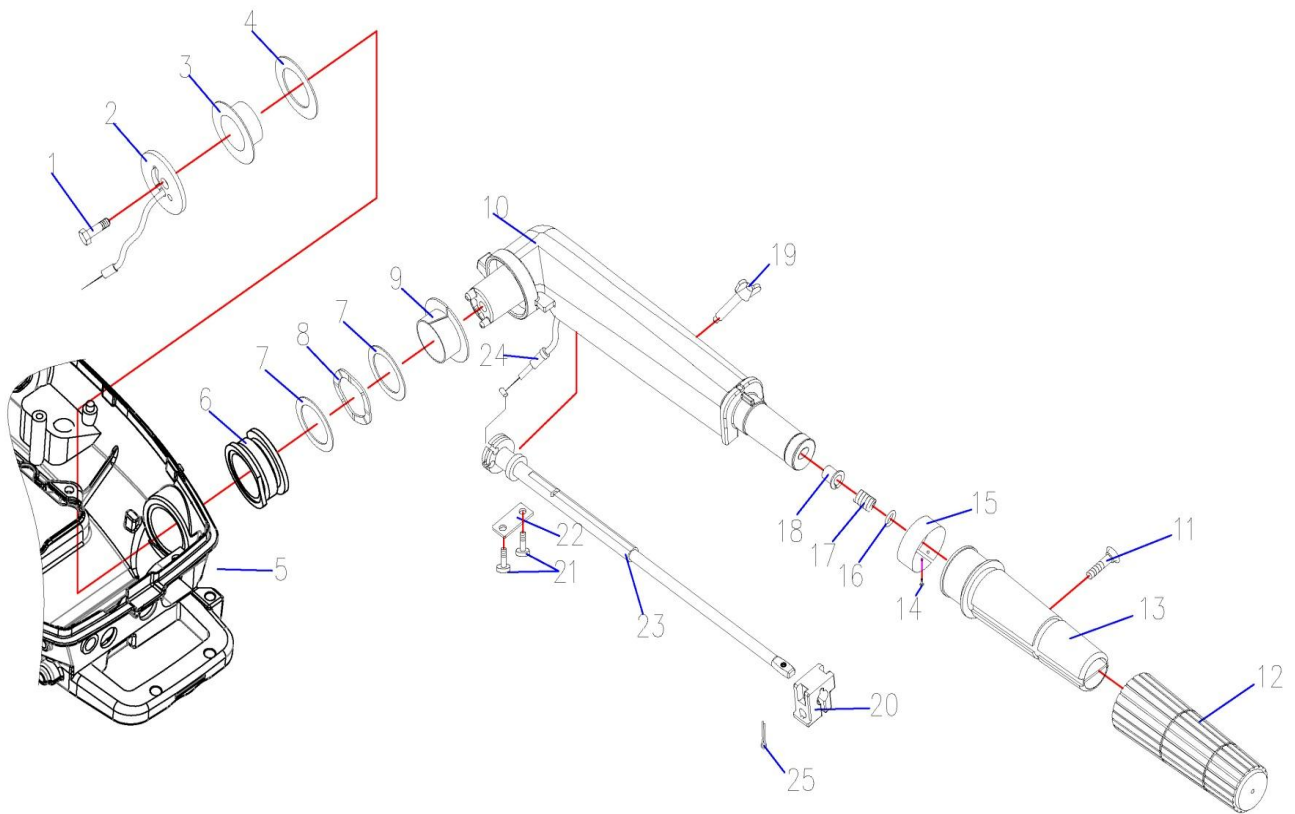


REF NO	物料代码	PART CODE	DESCRIPTION (EN)	DESCRIPTION	Q'TY
1	01061411	5F-02.07	Stopper rod sleeve	制动器连杆护套	1
2	01061403	5F-01.03.09	Rubber support (right)	橡胶固定架 (右)	1
3		5F-0 1.03.0 9	Rubber suppor (left)	橡胶固定架 (左)	1
4	01011406	5F-02.01	Bottom cowling	底座	1
5	01070616	9.8F-02.11.03	Bushing	衬套	1
6	1060612	9.8F-02.11.02	Rubber ring	橡胶圈	1
7	01010615	9.8F-02.11.01	Front lock handle	前锁紧手柄	1
8	01070617	9.8F-02.11.04	Washer	垫片	1
9	01080617	9.8F-02.11.05	Waveform washer	波形垫圈	1
10	01080618	9.8F-02.11.06	Lock plate	锁紧片	1
11	0104171	GB/T97.1	Plane washer	平垫6	1
12	01041541	GB/T93-1987	Spring washer	弹垫6	1
13	010405101	GB/T5783-2000	Bolt	六角头螺栓M6*12	1
14	0104007	GB/T5783	Bolt	六角头螺栓M6x16	2
15	0104164	GB/T96	Plane washer	平垫6	2
16	01081404	5F-01.04.01	Fuel tank support	油箱支撑架	1
17	0104007	GB/T5783	Bolt	六角头螺栓M6x20	1
18	0104171	GB/T97.1	Plane washer	平垫6	1
19	01070343	F4-01.07.05.00	Fuel cock assy.	油开关组件	1

20	01070314	F4-01.07.05.01	Fuel cock knob	油开关旋钮	1
21	01061405	5F-01.04.04	Fuel line	油管10	2
22	01050333	F4-01.07.08.00	Fuel filter	燃油滤清器组件	1
23	01061409	5F-02.03	Plug	堵塞B	1
24	01081405	5F-02.06.00	Throttle cable support	油门钢索支架	1
25	0104007	GB/T5783	Bolt	六角头螺栓M6x12	1
26	0104171	GB/T97.1	Plane washer	平垫6	1
27	01060608	9.8F-02.04	Choke lever bushing	阻风门拉杆护套	1
28	01071405	5F-02.05.00	Choke handle	阻风门手柄	1
29	01101401	5F-01.03.12	Engine shut-off switch assy.	急停开关总成	1
30	01061408	5F-02.02	Plug A	堵塞A	1
31	01061410	5F-02.04	External fuel line plug	外接油管堵塞	1
32		-	Clip	管夹10	8
33	01031404	5F-01.03.07	Ignition coil assy	点火控制器组件	1
34	0104076	GB/T818	Cross-recessed screw	十字槽盘头螺钉M4*14	1
35	01100106	15F-01.07.01.00	Fuel joint assy.	燃油管插头组件	1
36	0104171	GB/T97.1	Plane washer	平垫6	1
37	0104007	GB/T5783	Bolt	六角头螺栓M6x20	1
38		5F-01.04.15	Fuel line	油管6*10*86	1
39	01070226	F15-05.00.00.17	Three way connector	三通	1
40		5F-01.04.13	Fuel line	油管6*10*34	1
41	01050333	F4-01.07.08.00	Fuel filter	燃油滤清器组件	1
42		5F-01.04.16	Fuel line	油管5*10*140	1
43		5F-01.04.17	Corrugated pipe	波纹管140外径14	1
44			Clip	管夹14	2
45	01061405	5F-01.04.04	Fuel line	油管14	1
46	0104137	GB/T6170	Bolt	六角头螺母M6	5
47	01041541	GB/T93-1987	Spring washer	弹垫6	5
48	0104171	GB/T97.1	Plane washer	平垫6	2
49	01061404	5F-01.04.02	Fuel tank dampler	油箱减震器组件	3
50		GB/T5287	Plane washer	平垫6	3
51	01071404	5F-01.04.11.00	Fuel tank assy.	燃油箱组件	1
52	01061401	5F-01.04.12	Fuel tank damper	油箱减震圈	1
53		F4-01.07.02.00	Fuel tank cap	油箱盖组件	1

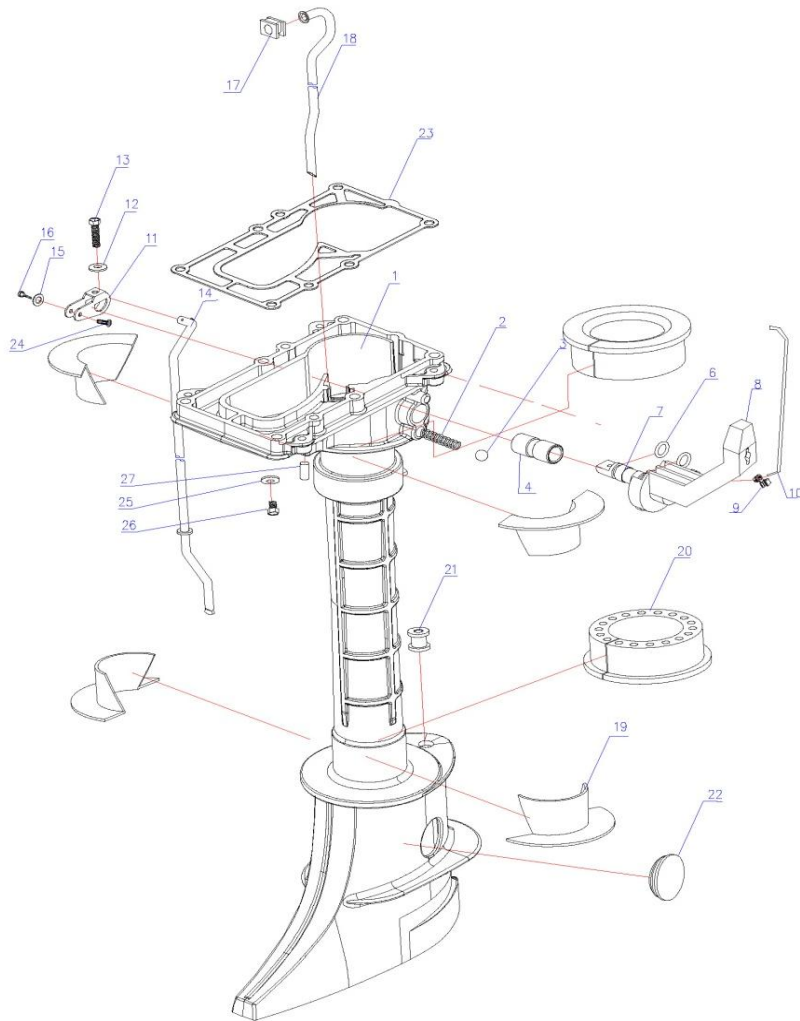


REF NO	物料代码	PART CODE	DESCRIPTION (EN)	DESCRIPTION (CN)	Q'TY
1	1051402	5F-01.01.02.01	Crankshaft & rod	曲轴连杆	1
2	01081403	5F-01.01.10	Plate washer	曲轴限位环	2
3	1051410	5F-01.01.11	Oil seal	曲轴油封20*47*8	2
4	01051405	5F-01.01.02.05	Needle bearing	滚针轴承	1
5	1051403	5F-01.01.02.02	Piston	活塞	1
6	01050626	9.8F-01.06.25	Piston pin circlip	活塞销卡簧	2
7	01051401	5F-01.01.02.03	Piston pin	活塞销	1
8	1051407	5F-01.01.02.07	Top ring	副气环	1
9	01051406	5F-01.01.02.06	2nd ring	主气环	1



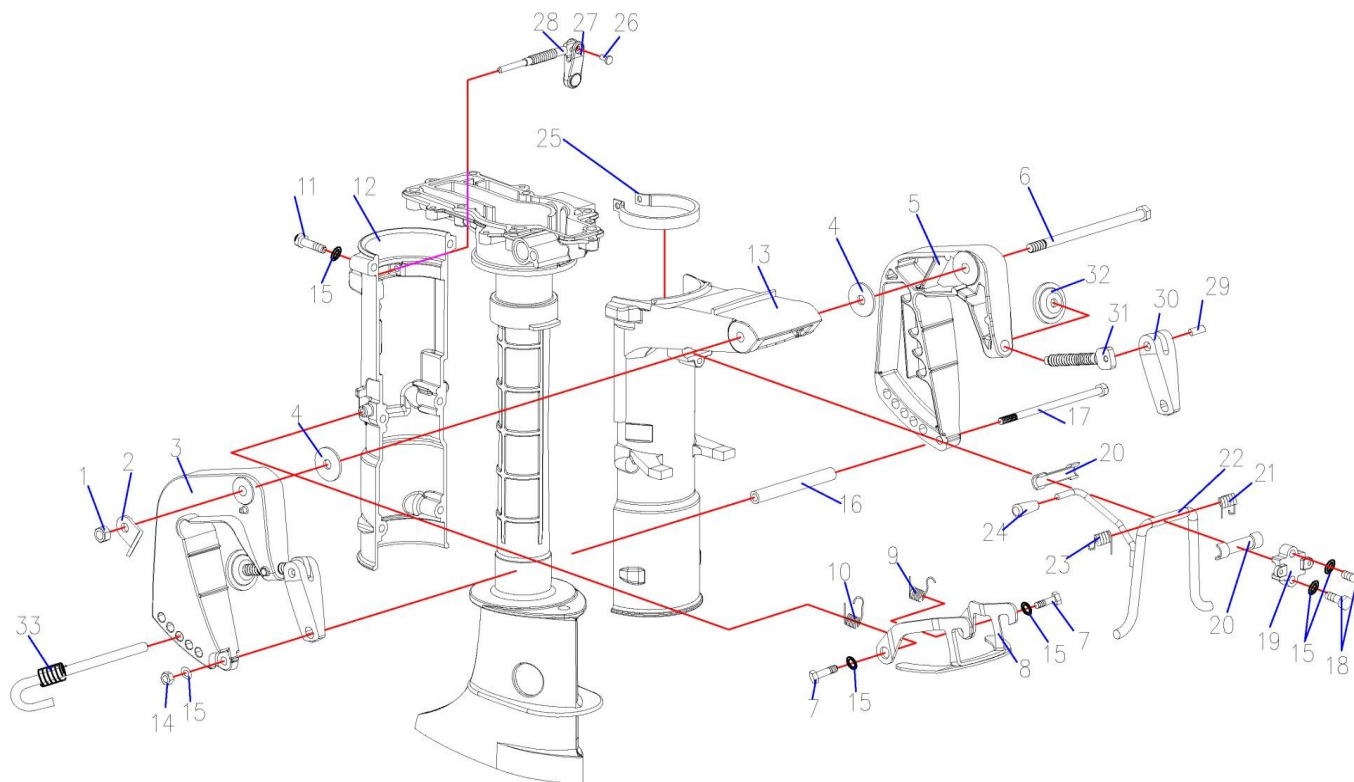
REF NO	物料代码	PART CODE	DESCRIPTION (EN)	DESCRIPTION	Q'TY
1	01040170	GB/T5782	Hexagonal bolt	六角头螺栓M8X25	1
2	01080318	F4-04.03	Plate	操舵手柄压板	1
3	01070329	F4-04.04	Bushing	衬套	1
4	01080319	F4-04.05	Plane washer	垫片A	1
5	01011406	5F-02.01	Bottom cowling	底座	1
6	N/A	F4-04.01.02.01	Damper insert	减震环嵌件	1
7	01080320	F4-04.07	Washer	垫片B	2
8	01080321	F4-04.08	Corrugated washer	波形垫圈	1
9	01070330	F4-04.06	Bushing	减磨圈B	1
10	01011407	5F-04.01	Steering handle	操舵手柄	1
11	0104117	GB/T820	Screw	十字半沉头螺钉M5X25	1
12	01060124	15F-04.07.14	Steering grip	手柄橡胶套	1
13	01070154	15F-04.07.13	Handle	手柄	1
14	0104088	GB/T845	Screw	十字槽盘头自攻螺钉ST2.2*6	1
15	01100111	15F-04.07.15	Throttle indicator	油门标牌	1
16	0104160	GB/T848	Plane washer	平垫10	1
17	01090124	15F-04.07.11	Spring	弹簧	1

18	01070153	15F-04.07.12	Bushing	衬套	1
19	01020126	15F-04.07.09	Friction adjusting screw	阻力调参旋钮	1
20	01070152	15F-04.07.08	Friction piece	锁紧块	1
21	0104076	GB/T818	Screw	十字槽盘头螺钉M5X12	2
22	01080131	15F-04.07.07	Plate	节气门杆压板	1
23	01070151	15F-04.07.05	Throttle shaft	节气门杆	1
24	01101402	5F-04.02	Throttle cable	油门控制钢索	1
25	01041850	GB/T91	Cotter pin	开口销1.6*12	1

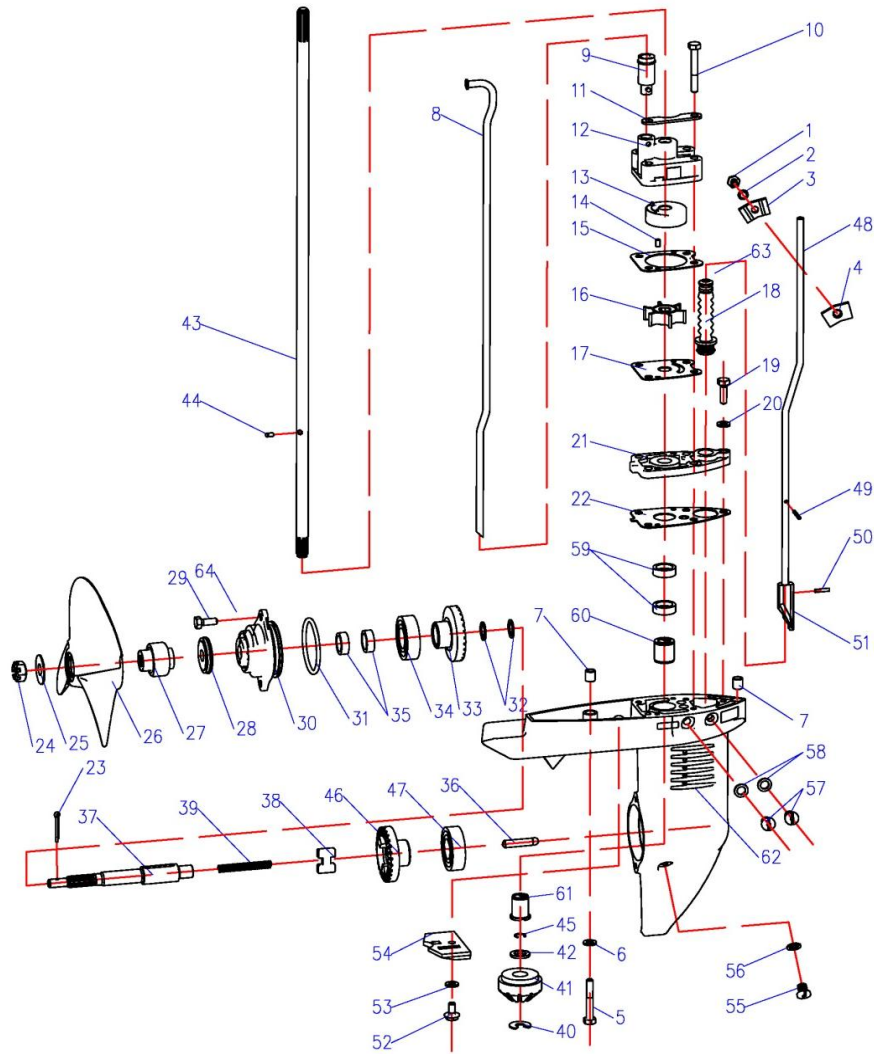


REF NO	物料代码	PART CODE	DESCRIPTION (EN)	DESCRIPTION (CN)	Q'TY
1	01011408	5F-05.02.01	Waterborne casing	水上装置壳体	1
2	01090315	F4-05.04	Spring	压簧	1
3		F4-05.03	Steel ball	钢珠	1
4	01021405	5F-05.02.02	Shift axle sleeve	档位轴套	1
6	01060327	F4-05.02.03	O-ring	拨叉O型圈	2
7		5F-05.03.01	Shift handle axle	档位手柄轴	1
8	01071406	5F-05.03.00	Shift handle	档位手柄组件	1

9	01070603	9.8F-01.01.13	Rod connector	连杆接头	1
10	01021408	5F-05.07	Stopper rod	制动器连杆	1
11	01081406	5F-05.04	Shift lever support	变档连杆支架	1
12	0104154	GB/T93	Spring washer	弹垫4	1
13		GB/T 5783	Bolt	六角头螺栓M4*16	1
14	01021406	5F-05.05	Shift lever	变档连杆	1
15	0104171	GB/T97.1	Plane washer	平垫6	1
16	01041850	GB/T91	Cotter pin	开口销1*10	1
17	01060329	F4-05.13	Water pipe upper seal	水管上密封圈	1
18	01101403	5F-05.01	Water pipe	水管	1
19	01070333	F4-05.08	Damper bushing	减震圈衬套	4
20	01060328	F4-05.09	Damper	减震圈	2
21	01060325	F4-05.01.03	Shift cam lever sealing	变档凸轮杆密封圈	1
22	01060326	F4-05.01.04	Plug	水上闷头	1
23	01051404	5F-01.01.01	Gasket	机体密封垫	1
24	01021407	5F-05.06	Shift lever pin	变档连杆销	1
25	01080139	15F-06.01.04	Washer	螺塞密封垫	1
26	0104007	GB/T5783	Bolt	六角头螺栓M8*8	1
27	01021401	5F-05.08	Cooling water pilot pipe	出水管	1



REF NO	物料代码	PART CODE	DESCRIPTION (EN)	DESCRIPTION	Q'TY
1		GB/T889	Bolt	非金属嵌件六角头螺母M8	1
2	01080314	F4-03.02	Plate	孔板	1
3	01010308	F4-03.01.01	C clamp bracket (left)	夹紧托架 (左)	1
4	01070325	F4-03.03	Nylon washer	尼龙垫片	2
5	01010309	F4-03.01.02	Clamp bracket (right)	加紧托架 (右)	1
6	01040170	GB/T5782	Bolt	六角头螺栓M8*135	1
7	0104007	GB/T5783	Bolt	六角头螺栓M6*10	2
8		F4-03.05.08.00	Tilt hook assy.	起翘锁紧钩组件	1
9	01090314	F4-03.05.08.04	Spring B	锁紧钩扭簧B	1
10	01090313	F4-03.05.08.03	Spring A	锁紧钩扭簧A	1
11	01040170	GB/T5782	Bolt	六角头螺栓M6*35	6
12	01010312	F4-03.05.04	Swivel bracket cover	旋转托架盖	1
13	01010310	F4-03.05.01	Swivel bracket	选择托架	1
14		GB/T52	Bolt	六角头螺母M6	1
15	0104171	GB/T97.1	Plane washer	平垫6	11
16	01020312	F4-03.04	Collar	螺栓垫管	1
17	01040170	GB/T5782	Bolt	六角头螺栓M6*120	1
18	0104007	GB/T5783	Bolt	六角头螺栓M6*20	2
19	01010311	F4-03.05.03	Plate	调整支架压板	1
20	01070326	F4-03.05.02.05	Friction reducing pad	减磨垫	2
21	01090312	F4-03.05.02.04	Spring	扭簧B	1
22	01080315	F4-03.05.02.01	Trim support	角度调整支架	1
23	01090311	F4-03.05.02.03	Spring A	扭簧A	1
24	01060322	F4-03.05.02.02	Rubber sleeve	支架手柄橡胶套	1
25		F4-05.05.05.00	Locker	锁紧圈组件	1
26		GB/T875	Rivet	扁平头空心铆钉4*10	1
27	01070327	F4-03.05.06.01	Locker handle	锁紧手柄	1
28	01020313	F4-03.05.06.02	Locker bolt	锁紧螺杆	1
29	0104222	GB/T1015	Rivet	半沉头空心铆钉4*22	2
30	01070140	15F-03.05.02.04	Clamp handle	夹紧手柄	2
31	01020311	F4-03.01.03	Transom clamp bolt	艃板夹紧螺杆	2
32	01080118	15F-03.05.02.03	Clamp plate	夹紧盘	2
33	01070328	F4-03.05.07.00	Trim rod	角度限位插销组件	1



REF NO	HIDEA CODE	PART CODE	DESCRIPTION (EN)	DESCRIPTION	Q'TY
1	10405101	GB/T5783-2000	Bolt	六角头螺栓M6*20	1
2		GB/T96.1-2000	Plane washer	平垫6	1
3	01050351	F4-06.23	Shift cam clamp pad B	变档凸轮夹紧块B	1
4	01050350	F4-06.22	Shift cam clamp pad A	变档凸轮夹紧块A	1
5	010405106	GB/T5782-2000	Bolt	六角头螺栓M6*40	2
6		GB/T96.1-2000	Plane washer	平垫6	2
7	01020307	F4-06.27	Dowel pin	空心定位销	2
8	01101403	5F-05.01	Water tube	水管	1
9	01060333	F4-06.21.04	Water tube lower seal	水管下密封垫	1
10	010405106	GB/T5782-2000	Bolt	六角头螺栓M6*45	4
11	01080329	F4-06.20	Plate	水泵压条	2
12	01070342	F4-06.21.01	Water pump housing	水泵壳体	1
13		F4-06.21.02	Insert cartridge	水泵内壳	1
14	01020316	F4-06.19	Dowel pin	水泵座定位销	2
15	01050349	F4-06.18	Gasket	水泵密封垫	1
16	01060332	F4-06.21.03.00	Impeller	水泵叶轮组件	1
17		F4-06.17	Plate	水泵垫板	1

18	01060331	F4-06.15	Rubber gasket	波形橡胶密封垫	1
19	010405101	GB/T5783-2000	Bolt	六角头螺栓M6*25	1
20		GB/T848-2000	Plane washer	平垫6	1
21	01010319	F4-06.14	Dowel pin	水泵座定位销	1
22	01050348	F4-06.13	Gasket	水泵座密封垫	1
23		15F-06.14.07	Cotter pin	开口销	1
24	01020318	F4-06.26	Slotted hexagonal blot	开曹六角螺母	1
25		GB/T96.1-2000	Plane washer	平垫8	1
26	01010320	F4-06.25.01	Propeller	螺旋桨	1
27	01060334	F4-06.25.02.00	Propeller shaft teeth	螺旋桨内花键组件	1
28	01020317	F4-06.24	Washer	螺旋桨垫块	1
29		GB/T57832-2000	Bolt	六角头螺栓M6*16	2
30	01010318	F4-06.07.01	Lower unit casing cover	水下壳体盖	1
31	01060330	F4-06.07.03	Lower unit casing o-ring	水下壳体O型圈	1
32	01080325	F4-06.05	Washer	垫片	1
33	01050344	F4-06.06	Reverse gear	倒档齿轮	1
34			Bearing	深沟球轴承6004C2	1
35	01050345	F4-06.07.02	Oil seal	油封	2
36	01050343	F4-06.04.04	Shift plunger	变档柱塞	1
37	01050340	F4-06.04.01	Propeller shaft	螺旋桨轴	1
38	01050342	F4-06.04.03	Dog clutch	离合器片	1
39	01050341	F4-06.04.02	Spring	压缩弹簧	1
40		F4-06.10	Circlip	开口档圈	1
41	1050346	F4-06.08	Pinion gear	主动轮	1
42	01080326	F4-06.09	Pinion tab	主动轮调整片	1
43	01051414	5F-06.00.01	Drive shaft	驱动轴	1
44	01020319	F4-06.11.03	Drive shaft pin	驱动轴限位销	1
45	01090316	F4-06.11.02	Circlip	弹性挡圈(轴用)	1
46	01050339	F4-06.03	Forward gear	正档齿轮	1
47			Bearing	深沟球轴承6004C2	1
48		5F-06.01.01	Shift cam lever	变档凸轮杆	1
49	01020320	F4-06.12.02	Limit pin	限位销	1
50		15F-06.04.03	Pin	圆柱销	1
51		15F-06.04.02	Shift cam	变档凸轮	1
52	0104012	GB/T5789	Bolt	六角法兰螺栓M6*12	1
53		GB/T861.1	Washer	内六齿锁紧垫圈6	1
54	01010317	F4-06.02	Anode B	阳极B	1
55	01020128	15F-06.01.03	Oil plug	注油口螺塞	1
56	1080139	15F-06.01.04	Oil plug washer	注油口螺塞密封垫	1
57	01020128	15F-06.01.03	Oil plug	注油口螺塞	2
58	01080139	15F-06.01.04	Oil plug washer	注油口螺塞密封垫	2
59		F4-06.01.02	Oil seal	油封	2
60	01050336	F4-06.01.03	Oil bearing	含油轴承	1

61	01050337	F4-06.01.04	Oil bearing	带肩含油轴承	1
62	01010316	F4-06.01.01	Lower casing	水下壳体	1
63	01090317	F4-06.16	Spring	橡胶圈弹簧	1
64	0104160	GB/T848	Plane washer	平垫6	2